

West African Sculpture

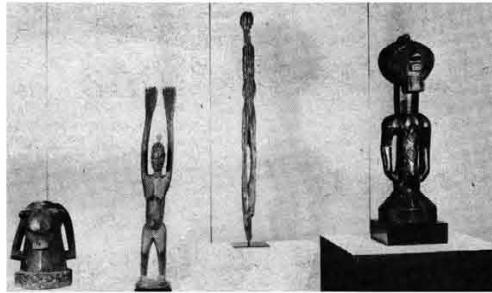
A definitive exhibit of West African sculpture is on view through November 26 at Joseloff Gallery of the Hartford Art School, University of Hartford.

Twenty-eight works are included in the show, which has been arranged and coordinated by Wolfgang Behl, associate professor of sculpture. The works are on loan from the Merton D. Simpson and Royal-Athena Galleries of New York, which are nationally recognized as foremost exhibitors of African works.

According to Professor Behl the exhibit is one of "outstanding quality" highly representative of the west coast of Africa, including the Baule, Dan, Dogon and Cameroon tribes. Linear works of the northern Sudan area, as well as the massive or organic works characteristic of more easterly sections are on view in the collection.

Among the sculptures are a Baule figurine distinguished by its sophistication and fine workmanship; Foro Society masks with symmetrical arrangement of form; face and head masks of several tribes; provincial Bini rooster made of wood covered with metal foil or "economy bronze," and a Sudan rain goddess with raised arms.

The exhibit is open to the public; there is no admission charge. Gallery hours are weekdays only 10 a.m. to 5 p.m., Monday through Friday; and 7 p.m. to 9 p.m., Monday through Thursday.



Linear sculptures from the northern region of West Africa and the more massive sculptures from the eastern region are on display through November 26 in the Joseloff Gallery of the Hartford Art School, University of Hartford. The entire spectrum of West African sculpture is covered in this outstanding sculpture show.

PEOPLE...
ARTICLES FOR THE
FEATURE ON
WITCHCRAFT ARE STILL
NEEDED. DID EVERYONE
WHO WAS SO ENTHUSIASTIC
LAST WEEK COP-OUT
ON ME?
DON'T SAY IT,
WRITE IT!
DISAPPOINTED

Emergency Closing 69-70

While some other occurrence, such as a fire, flood, power failure or windstorm, may motivate the cancellation of classes and other activities, most closings are announced in response to severe snowstorms and to their effects upon our capacity to park automobiles and to move them on campus roads.

Notice of cancellation will be given by the inclusion of the name of the University of Hartford in "No School" lists read over radio stations WDRC, WPOP, WRCH, WTCI, and WWUH.

We shall try to have notice of morning cancellations read before 7:00 a.m., those of late afternoon classes read before 3:00 p.m., and those of evening classes and events read before 5:00 p.m.

Because they must handle a very large volume of notices, radio stations may not be able to do more than indicate by name each institution. Certain activities and services may be regarded as so essential as to justify their continuance during a general closing. Should this be so, those in charge must give advance notice to the persons involved that they are to remain on, or report for, duty despite the cancellation notice.

In general, persons remaining on campus for emergency duty after a cancellation because of snow will be asked to move their parked cars to designated areas where they will interfere minimally with snow removal. Those coming to the campus during such a time will be asked to use only public transportation unless snowfall shall have ceased, in which case they may come in private cars, but are to park only in certain specified areas indicated by the Superintendent of Buildings and Grounds. A memorandum detailing such arrangements has been prepared by the cancellation officer and made available to each supervisor.

Any questions regarding these arrangements should be directed to George H. Menke, Cancellation Officer, extension 240. He should also be informed at once of any condition which might constitute grounds for cancellation of activities. (Home telephone: 523-7952.)

Library Committee Report

Dear Students:

It is my pleasure to report to you some significant changes in the methods and functioning of our library system. These changes have been officially recognized at the last meeting of the Faculty Library Committee and have recently been enacted. They include:

- 1) Faculty and staff may no longer borrow books for unlimited periods of time. The new policy grants faculty a 30 day limit with renewals possible if made in person. If a student requests a book which is being held by a faculty member on the renewal policy, it is subject to immediate recall. In order to get books back on the shelves, please be sure to put in a written request for books you cannot find. All faculty holdings will be called back for inventory prior to Christmas vacation.
- 2) ALL CLASSROOMS (EXCLUDING LABS) NOT BEING UTILIZED BY A CLASS MAY BE USED FOR INDIVIDUAL STUDY.
- 3) A Library Consultant, Mr. J. Lucker of Princeton University, was here on 11/5/69 to evaluate the science library. Results of his analysis will be posted at a later date.
- 4) The Dana Hall Library has made funds available for reprints of all major science works on microfilm. These will be on the

LANDMARKS OF SCIENCE series. 5) Attempts are being made to establish a borrowing policy with the Department of Mental Health and Education Library. If successful, this policy will enable graduate students in education to use the books available, on campus in the evenings.

However, in order to insure the availability of books to all students, we have found it necessary to install an alarm system in the University Hall Library, and an inspector at the door of Auerbach.

I hope you will all take full advantage of these refinements and use the resources of our libraries productively.

Respectfully submitted,
Susan Silver
Chairman of the Library
Committee

Wash, wet, soak, hunt, squirt, wash, soak, wet, dry a little.

Contact lenses were designed to be a convenience. And they are up to a point. They're convenient enough to wear, once you get used to them, but, until recently, you had to use two or more different lens solutions to properly prepare and maintain contacts. You needed two or three different bottles, lens cases, and you went through more than enough daily rituals to make even the most steadfast individuals consider dropping out.

But now caring for your contacts can be as convenient as wearing them. Now there's Lensine, from the makers of Murine. Lensine is the one lens solution designed for complete contact lens care . . . preparing, cleaning, and soaking.

Just a drop or two of Lense before you insert your lens prepares it for your eye. Lense makes your contacts, which are made of modern plastics, compatible with your eye. How? Lense is an "isotonic" solution. That means it's made to blend with the eye's natural fluids. So a simple drop or two coats the lens, forming a sort of comfort zone around it.

Cleaning your contacts with Lense fights bacteria and foreign deposits that build up during the course of the day. And for overnight soaking, Lense provides a handy contact canister on



the bottom of every bottle. Soaking your contacts in Lense between wearing periods assures you of proper lens hygiene.

Improper storage between wearings permits the growth of bacteria on your lenses. This is a sure cause of eye irritation and, in some cases, it can endanger your vision. Bacteria cannot grow in Lense. Lense is sterile, self-sanitizing, and antiseptic.

Let your contacts be the convenience they were designed to be. The name of the game is Lense. Lense, made by the Murine Company, Inc.

Are you cut out for contact sports?

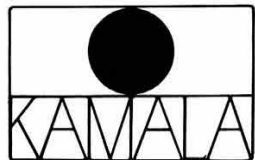
History Forum

The History Forum will present Dr. Esposito, who will speak on the subject of Sino-Soviet Relations in Room C of the Gengras Campus Center at 7:30 p.m. Wednesday, November 19. There will be refreshments served. Admission 25 cents.

Baritone Recital

On Friday, November 21, baritone Daniel Parker gives his senior voice recital, assisted by a string quartet and by Maureen Ferrara at the piano. The program takes place at 8:30 p.m. in Millard Auditorium, and will include works by Mozart, Dello Jolo, Barber, Bach, and Dvorak.

Two senior recitals take place Sunday, November 23: Nancy Bridges, soprano at 3 p.m. in the Berkman Recital Room, and Salvatore Macchia, double bass at 8:30 p.m., also in the Berkman Recital Room.



- IMPORTED BEADS,
- JEWELRY PARTS,
- INSTRUCTION, HAND-CRAFTED JEWELRY,
- POTTERY, HAND-CROCHETED CLOTHES,
- SCULPTURE, GRAPHICS,
- ETC.

12 Union Place
Hartford, Conn.
Hours: 12-6
Thurs. till 9